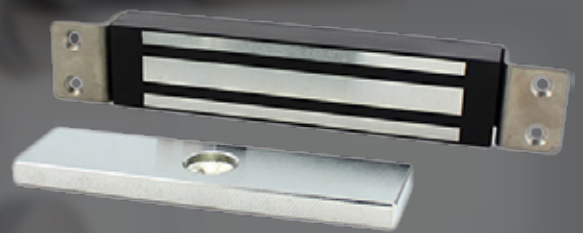


# MX-350SED

## Embedded Electromagnetic Lock

- With door position detection output.
- Voltage:DC12V or DC24V.
- Holding Force: 180kg(350Lbs).
- Lock Size: 191L\*33W\*21H(mm).
- Armature Plate:130L\*32W\*8H(mm).
- Current Draw: 12V/480mA 24V/240mA.
- Suitable for fire exit door or out-swing door.

Weight: 1.2kg.



### Overview

MX-350SED single door Embedded magnetic lock, with the door state signal feedback , specially used to normal glass door, wodden door, metal door, fire doors, small doors. Hoisting design, saves time and power when installation. Inward door, frameless glass door, narrow door all have a complete set of accessories. Special Anti-residual magnetic design makes automatic access control safer and more convenient.

### Features

- 1.With the door state signal feedback, passed 350lbs super static linear tension tests.
- 2.Anti-residual magnetic design, keep constant tension.
- 3.Built-in reverse current protection device (MOV), performance stability, safety coefficient is higher.
- 4.Wear materials, durable.
- 5.Electromagnetic suction work completely, there is no mechanical failure.
- 6.Shell with high strength alloy material, anode hardening treatment.
- 7.Lock body with double insulation treatment.
- 8.Through the European CE and ROHS, MA certification in China.



## MX-350SED

## Embedded Electromagnetic Lock

### Specification

Model	MX-350SED
Holding Force	180kg (350lbs)
Lock Status Sensors	NO,NC,COM
Rated Operating Voltage	12/24VDC
Current consumption	500mA / 12V or 250mA / 24V
Optional Functions	Relock Delay Timer, Buzzer
Surface finish for magnet	Zinc plated
Surface finish for armature plate	Zinc plated
Ambient temperature in °C	-10~+55°C (14-131F)
Suitable for	Wooden, Aluminum, Glass, Fireproof & Metal
Magnets Dimensions (L x W x D)	170L*35W*21H (mm)
Armature Plate Dimensions (L x W x D)	130L*33W*9.3H (mm)
Weight in kg	1.1kg
CE-mark for building	Yes
Rohs-mark for building	Yes

### Related Images

