

MX-23-NBL

Dual Failsafe Concealed Mortise Bolt Locks

The MX-23-NBL dual failsafe feature is available only from MICROAXS. Conventional failsafe locking bolts rely solely on a spring to retract the bolt while the MX-23-NBL bolt will unlock with or without the assistance of the spring. This is the only electric bolt lock listed by the California State Fire Marshal for locking of perimeter entrance and emergency exit doors after-hours.



Features

Dual Failsafe

The MICROAXS designed and patented MX-23-NBL is locked when energized. Recommended for safety applications, the door unlocks automatically when power is interrupted by the access control, power failure or a signal from the fire life safety system.

Large repelling magnets are located within the bolt and strike. When power is interrupted the bolt is retracted and held back by a spring. Should the spring fail, repelling magnets eject the bolt from the strike, unlocking the door.

While designed for perimeter applications the performance characteristics of the MX-23-NBL make it the first choice for all interior or exterior openings where the use of an electric bolt lock is applicable.

Bolt Design

The bolt is made of a lightweight and extremely resilient nylon material. While lack of weight enables the magnet to eject the bolt, an inherent feature is powerful and smooth operation. The longevity of this lock is unsurpassed compared to electromechanical locks with steel bolts with abrasive metal to metal interaction.

Additional bolt features include:

- 2500lbs Bolt Strength.
- Hardened Magnet Core, Resistant to Metal Cutting Saws.

Specification Grade Solenoids

All Spacesaver lock solenoids are manufactured by MICROAXS to precision specifications. MICROAXS solenoids are capable for superior overall performance in both force and longevity, providing years of service compared to other manufacturers off-the-shelf or commercial grade designs.



MX-23-NBL

Bolt Locks

Figure 3A, 3B, 3C, 3D: Typical Frame Header or Side Jamb Installation

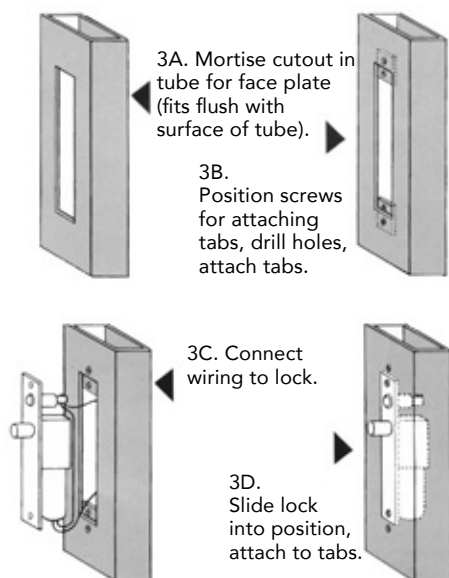
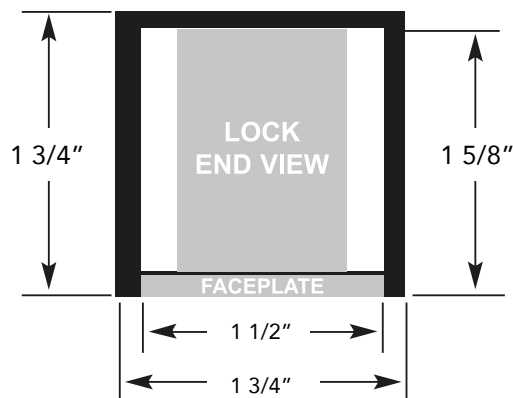


Figure 4: End View



Specification

Model	MX-23-NBL
Face Plate	8"L x 11/2"W x 1/8"D - standard 8 1/2"L x 11/2"W x 1/8"D - wood
Strike	4"L x 11/2"W x 19/16"D
Frame Inner Dimension Requirements	8"L x 11/2"W x 15/8"D
Bolt Material	Nylon with Center Magnet
Bolt Diameter	5/8"
Bolt Throw	5/8"
Mounting Tabs	Two Aluminum Mounting Tabs Are Provided for Easy Lock Installation See
Dual Voltage Coil	0.45 Amp @ 24VDC Continuous Duty, 0.9 Amp @ 12VDC Continuous Duty
Weight	1.5 lbs